

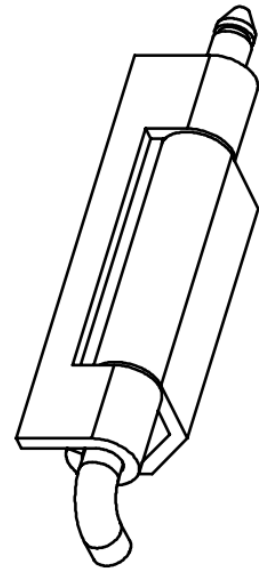
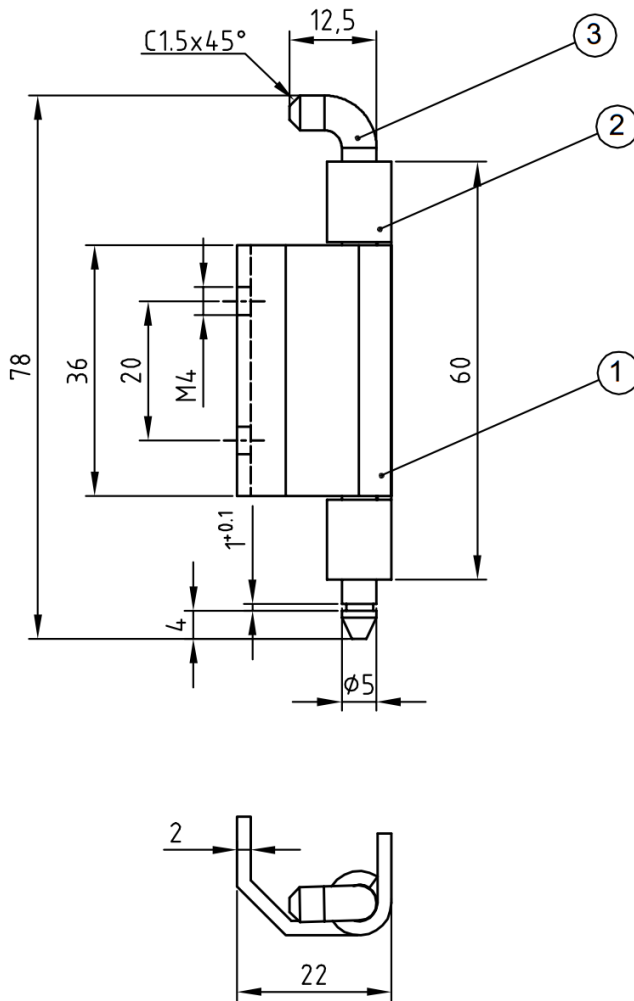
D57 Stainless Steel 316 Concealed Hinge

Features

- Concealed hinge for surface mounted doors
- RH / LH application
- 120° opening angle
- Weld-on / screw-on installation

Material

- Body: Stainless steel 316L
- Pins: Stainless steel 316L



Part No.	Hinge Material	Pin Material	Pin Version	Installation Type
D57-C130-4	Stainless Steel 316L	Stainless Steel 316L	With Groove + Retaining Ring	Screw-On / Weld-On